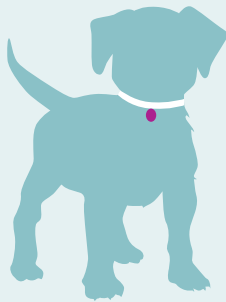


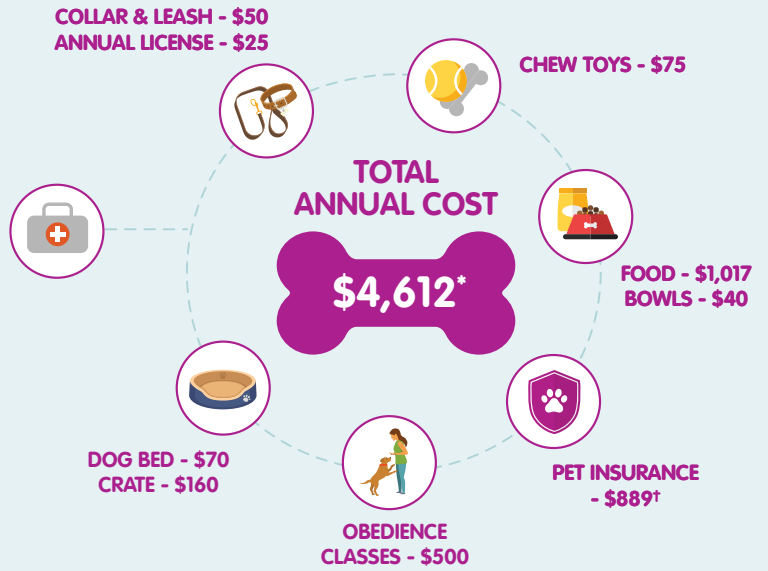
HOW MUCH IS THAT DOGGY?*

When you bring a new puppy home, make sure you're prepared for the expenses required to get them off to a healthy start!

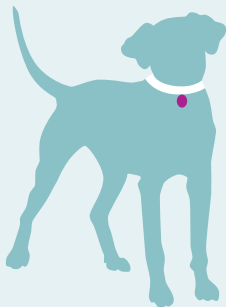


**VETERINARY CARE - \$1,825 Female
\$1,749 Male**

- Heartworm & flea/tick prevention - **\$194**
- Exams with vaccines - **\$502**
- Deworming medications - **\$66**
- Fecal exams - **\$107**
- Microchip - **\$81**
- Spay - **\$875** | Neuter - **\$799**



As your puppy continues to grow, be prepared for the annual expenses required to help keep your dog happy and healthy.



VETERINARY CARE - \$1,438

- Heartworm & flea/tick prevention - **\$247**
- Annual exams with vaccines - **\$174**
- Annual heartworm/lyme test - **\$95**
- Annual wellness profile - **\$153**
- Annual fecal exam - **\$54**
- Professional dental care - **\$717**



**LEARN MORE AND EXPLORE OUR
PET OWNER RESOURCES AT:**

PETSPLUSUS.COM



The information herein is summarized. All Pet Insurance plans have limitations and exclusions. Specific products, features, coverage limits, rates, and discounts may vary by province, eligibility, and are subject to change. Medical Conditions that are noted, symptomatic or diagnosed prior to enrollment, or during a waiting period are pre-existing to Coverage and not eligible for reimbursement. This advertisement is an outline only, the actual policy issued Terms and Conditions will prevail.

© 2022 All rights reserved. Pets Plus Us Pet Insurance policies are underwritten by Northbridge General Insurance Corporation, distributed by PTZ Insurance Services Ltd. & Société d'Assurances Collectives (Sodacoc) Inc. in Quebec. Pets Plus Us Pet Insurance is available in all provinces and territories. Pets Plus Us®, Pets Plus Us & Design and related words and logos are trademarks and the property of PTZ Insurance Services Ltd.

*All figures calculated as a national average from the OVMA 2022 Cost of Care research, conducted by province.

†National average for Pets Plus Us Accident & Illness More coverage with 80% co-insurance and a Level 2 deductible.