

HOW MUCH IS THAT DOGGY?*

When you bring a new puppy home, make sure you're prepared for the expenses required to get them off to a healthy start!



VETERINARY CARE - \$1410
 Heartworm & flea/tick prevention - \$127
 Exams with vaccines - \$414
 Deworming medications - \$49
 Fecal exams - \$89
 Microchip - \$66
 Spay or neuter - \$665

COLLAR & LEASH - \$42
 ANNUAL LICENSE - \$25



CHEW TOYS - \$65



FOOD - \$892
 BOWLS - \$30



TOTAL ANNUAL COST

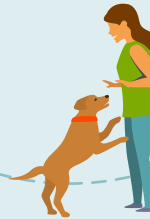
\$4,038*



PET INSURANCE - \$914†

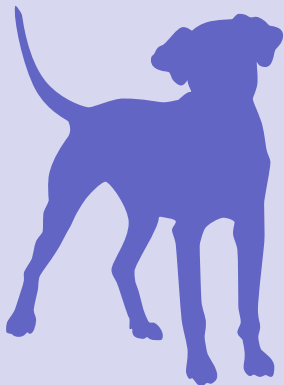


DOG BED - \$50
 CRATE - \$140



OBEDIENCE CLASSES - \$470

As your puppy continues to grow, be prepared for the annual expenses required to help keep your dog happy and healthy.



VETERINARY CARE - \$1182
 Heartworm & flea/tick prevention - \$235
 Annual exams with vaccines - \$147
 Annual Heartworm/Lyme test - \$78
 Annual Wellness profile - \$117
 Annual fecal exam - \$44
 Professional dental care - \$561

COLLAR - \$30
 ANNUAL LICENSE - \$25



CHEW TOYS - \$65



TOTAL ANNUAL COST

\$3,299*



FOOD - \$1,083



PET INSURANCE - \$914†

LEARN MORE AND EXPLORE OUR PET OWNER RESOURCES AT:

petsplusus.com



The information herein is summarized. All pet insurance plans have limitations and exclusions. Specific products, features, rates, and discounts may vary by province/territory, eligibility, and are subject to change.

This advertisement is an outline only, the actual policy issued Terms and Conditions will prevail. Medical Conditions that are noted, symptomatic or diagnosed prior to enrollment, or during a waiting period are pre-existing to Coverage and not eligible for reimbursement. © 2020 All rights reserved. Pets Plus Us Pet Insurance policies are underwritten by Northbridge General Insurance Corporation, distributed by PTZ Insurance Services Ltd. & Société d'Assurances Collectives (Sodaco) Inc. in Quebec. Pets Plus Us Pet Insurance is available in all provinces and territories. Pets Plus Us®, Pets Plus Us & Design and related words and logos are trademarks and the property of PTZ Insurance Services Ltd.

*All figures calculated as a national average from the OVMA 2020 Cost of Care research, conducted by province.

†National average for Pets Plus Us Accident & Illness More coverage with 80% co-insurance and a Level 2 deductible.